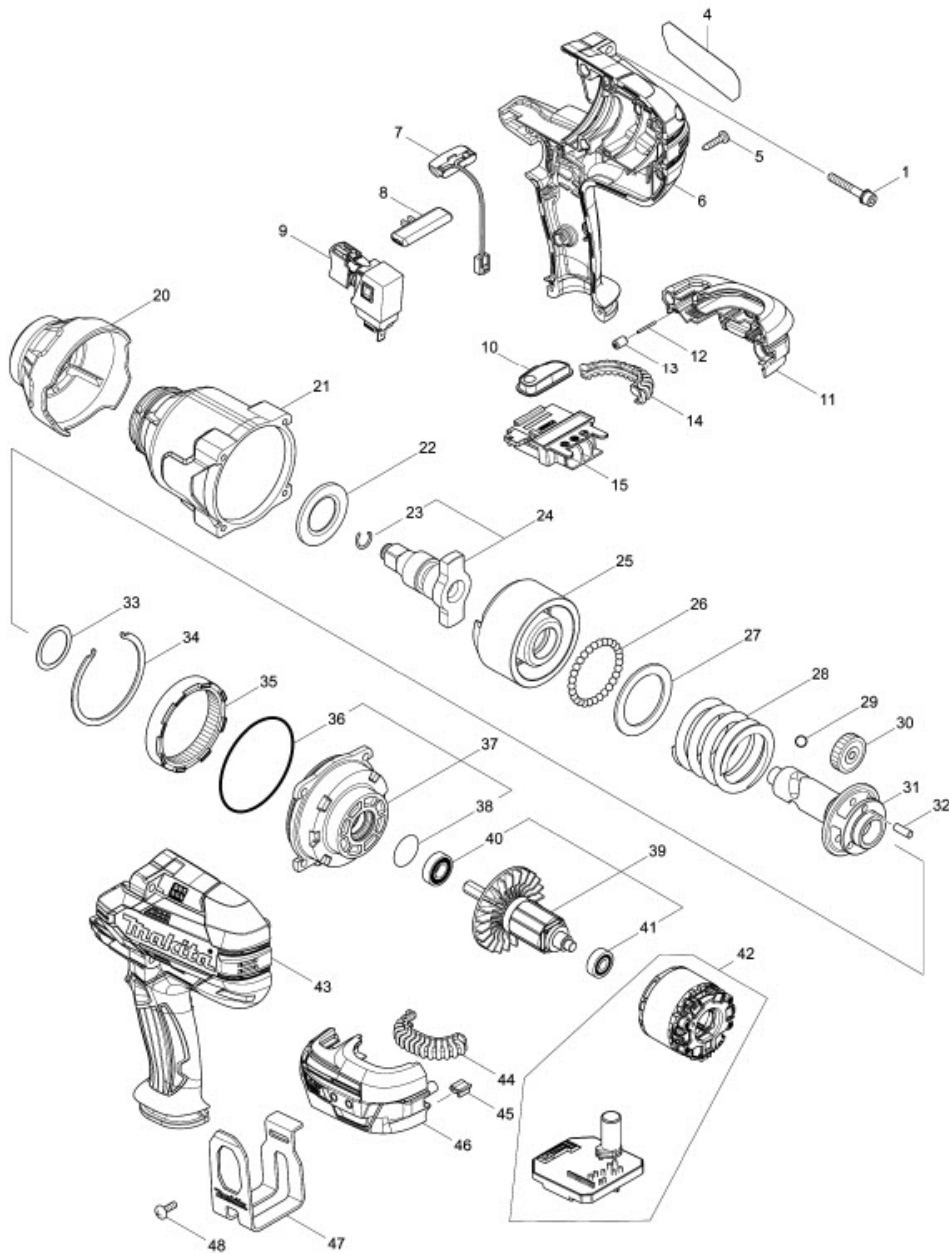


Part Diagram

Model No.DTW1002 CORDLESS IMPACT WRENCH



Item	Sub	Parts No.	Parts Description	Qty
1		251476-6	H.S.H.BOLT M5X35 WITH WR	4
4		851K57-8	DTW1002 NAME PLATE	1
004-1		857K86-9	DTW1002 NAME PLATE	1
5		266326-2	TAPPING SCREW 4X18	9
6		183C08-8	HOUSING SET	1
6	D10		INC. 43	
006-1		183H36-3	HOUSING SET	1
006-1	D10		INC. 43	
7		620351-1	LED CIRCUIT	1
8		456268-0	F/R CHANGE LEVER	1
9		143416-7	SWITCH COMPLETE	1
10		143417-5	SWITCH PLATE COMPLETE	1
11		183C12-7	BATTERY HOUSING SET	1
11	C10	263005-3	RUBBER PIN 6	2
11	D10		INC. 46	
12		268284-8	PIN 1.5	1
13		263036-2	RUBBER PIN 5	1
14		424773-5	CUSHION RUBBER	1
15		643899-6	TERMINAL	1
20		424775-1	BUMPER	1
020-1		424978-7	BUMPER	1
21		143411-7	HAMMER CASE COMPLETE	1
021-1		144473-8	HAMMER CASE COMPLETE	1
22		346948-5	WASHER 25	1
23		231907-1	RING SPRING 10	1
023-1		232323-0	RING SPRING 10	1
24		135717-7	ANVIL W ASS'Y	1
24	D10		INC. 23	
024-1		135717-7	ANVIL W ASS'Y	1
024-1	D10		INC. 23	
024-2		135804-2	ANVIL W ASS'Y	1
024-2	D10		INC. 23	
25		326613-2	HAMMER	1
26		216002-8	STEEL BALL 4.8	29
27		267493-6	FLAT WASHER 38	1
28		234383-8	COMPRESSION SPRING 38	1
29		216009-4	STEEL BALL 7.1	2
30		227391-6	SPUR GEAR 24	3
030-1		226879-3	SPUR GEAR 24	3
030-2		226880-8	SPUR GEAR 24	3
31		326611-6	SPINDLE	1
32		268079-9	PIN 5	3
33		267494-4	FLAT WASHER 25	1
033-1		267127-1	FLAT WASHER 26	1
34		346947-7	RETAINER	1
35		227392-4	INTERNAL SPUR GEAR 54	1
36		213720-9	O RING 67	1
37		135718-5	INTERNAL GEAR CASE ASS'Y	1
37	D10		INC. 36,38	
38		213961-7	O RING 22	1
39		519384-0	ROTOR ASS'Y	1
39	D10		INC. 40,41	
039-1		519593-1	ROTOR ASS'Y	1
039-1	D10		INC. 40,41	
40		210069-8	BALL BEARING 6900DDW	1
41		211022-7	BALL BEARING 607ZZ	1
42		629170-2	STATOR COMPLETE	1
042-1		629330-6	STATOR COMPLETE	1

Item	Sub	Parts No.	Parts Description	Qty
43		183C08-8	HOUSING SET	1
43	D10		INC. 6	
043-1		183H36-3	HOUSING SET	1
043-1	D10		INC. 6	
44		424773-5	CUSHION RUBBER	1
45		424517-3	CUSHION	1
46		183C12-7	BATTERY HOUSING SET	1
46	C10	263005-3	RUBBER PIN 6	2
46	D10		INC. 11	
47		346949-3	HOOK	1
48		251314-2	+ SCREW M4X12	2
49		857K87-7	DTW1002 SERIAL NO. LABEL	1
A01		***DC18RC	DC18RC FAST CHARGER	1
A02B		197265-4	BATTERY BL1840B SET	2
A02C		194204-5	BATTERY BL1830 SET	2
A02D		197280-8	BATTERY BL1850B SET	2
A02-1B		197265-4	BATTERY BL1840B SET	2
A02-1C		197600-6	BATTERY BL1830B SET	2
A02-1D		197280-8	BATTERY BL1850B SET	2
A02-2C		197600-6	BATTERY BL1830B SET	2
A03		450128-8	BATTERY COVER	1
A04		821551-8	CONNECTOR PLASTIC CASE (TYPE3)	1
A04B	C10	453974-8	LATCH	4
A05		837645-9	INNER TRAY	1
A06B		808B76-1	DTW1002RMJ INDICATION LABEL	1
A06C		808B78-7	DTW1002RFJ INDICATION LABEL	1
A06D		808B80-0	DTW1002RTJ INDICATION LABEL	1
A06-1B		817B48-5	DTW1002RMJ INDICATION LABEL	1
A06-1C		817B51-6	DTW1002RFJ INDICATION LABEL	1
A06-1D		817B54-0	DTW1002RTJ INDICATION LABEL	1
A07B		808B77-9	DTW1002RMJ PLASTIC CASE LABEL	2
A07C		808B79-5	DTW1002RFJ PLASTIC CASE LABEL	2
A07D		808B81-8	DTW1002RTJ PLASTIC CASE LABEL	2